

St Paul's Church  
Napier  
August 2011

Session and Board of Managers have considered the report relating to this historical painting which is in the lounge of the church.

We believe we have the responsibility to maintain historic artefacts such as this and will proceed with the conservation of this painting. It is expected that including freight and other items (new stretcher) this will cost approx \$1,200.

We invite Parishioners and others interested in this project to make a financial contribution to help us to get this work completed.

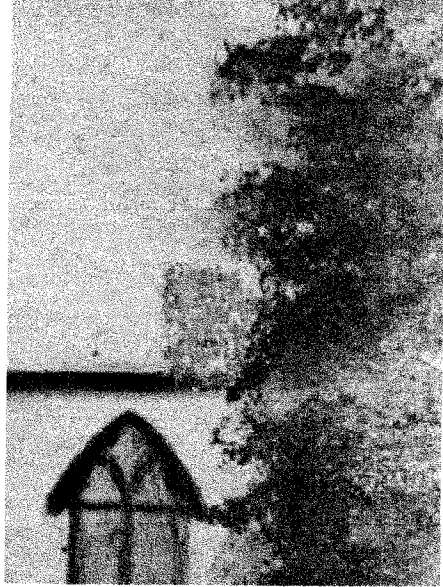
If anyone would like more information or would like to see the full report please contact Bryan Rudd.

*Bryan Rudd*

*Chair*

*Board of Managers*

*August 2011*



#### CONDITION REPORT AND ESTIMATE COST

ARTIST: MAD.  
TITLE: St Paul's Church, Napier  
DATE: 1898  
MATERIAL: Oil on canvas  
DIMENSIONS: 462 x 312 mm

The oil painting represents St Paul's Church in Napier, with an elderly gentleman outside. The painting is signed and dated in the bottom left corner. The painting is framed in a decoratively carved wooden frame.

#### CONDITION:

The painting is being held into the stretcher with metal tacks. Three keys of the stretcher are missing (one has fallen between the canvas and stretcher, causing a bulge in the canvas from the front). The bottom bar of the stretcher presents a split in the wood along the right side. The stretcher will need to be removed from its canvas to be restored and at this stage it is not possible to tell if it can be reused.

Overall the paint layer is very dirty and presents dust, fly spots and accretions. An oval shiny accretion is visible to the left of the figure of the man. The impression of the inside vertical edges of the stretcher bars are visible on the paint layer. A "T" shaped tear, with paint losses, is visible on the roof of the church. A patch had been applied to the rear of the tear in a past intervention, though it is no longer attached. A puncture hole, with paint loss, is visible in the top right corner of the sky. A matte circular indentation is visible to the right of the tower of the church. Two

scratches, with paint losses, are present along the right edge. Paint losses are visible around the edges of the painting where the paint layer has touched the frame.

PROPOSED TREATMENT:

- Removal of the painting from the frame
- Removal of the painting from the stretcher
- Dry clean of the rear of the canvas
- Flattening of the indentation and bulge
- First repair, thread by thread of the canvas
- Repair of the tear and puncture hole with application of canvas patches
- Re-tensioning of the painting onto either the cleaned old stretcher or new stretcher, keys in and secured
- Surface clean of the paint layer
- Filling of the paint losses
- Retouching of the paint losses
- Application of varnish
- Remounting of the painting into its frame
- Application of a backing

ESTIMATE COST

For the conservation (excludes new stretcher)	
between	\$ 700.00 - 900.00
Documentation	<u>\$ 75.00</u>
Total	\$ 775.00 - 975.00

The above costs are exclusive of G.S.T., new stretcher, packaging and transportation.